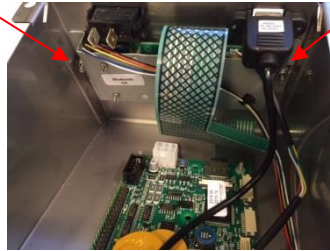
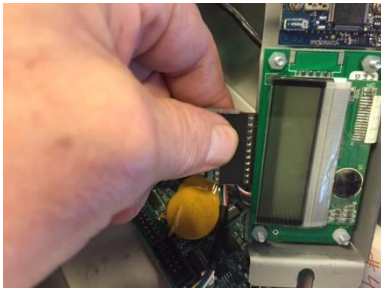


Replacing the TopBrewer display module.

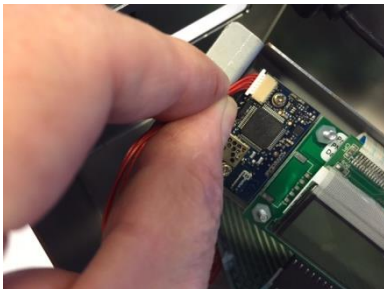
1. Unscrew the front nuts, and release the two nuts at the back holding the control box.
2. Unscrew the nut to the left and release the nut to the right inside the box.



3. Unplug the keyboard.



4. Unplug the Blue Tooth module.



5. Unplug the display communication line.



6. Fit a new display module, following the instructions in opposite direction.
7. Check and test.
8. Return module to Scanomat for refurbish.

